

STANDARD/OPTIONAL EQUIPMENT

●: Standard equipment ○: Optional equipment

| | PC30MR-2 | PC35MR-2 | PC50MR-2 |
|---|----------|--|----------|
| Arm | | | |
| STD arm with aux. piping PC30MR: 1260mm PC35MR: 1350mm PC40MR: 1440mm PC50MR: 1640mm | ● | ● | ● |
| Long arm with aux. piping PC30MR: 1660mm PC35MR: 1750mm PC40MR: 1900mm PC50MR: 2000mm | ○ | ○ | ○ |
| STD arm without aux. piping | ○ | ○ | ○ |
| Long arm without aux. piping | ○ | ○ | ○ |
| Bucket Capacity Bucket width (incl. side cutters) | | | |
| 0.035m ³ 250mm (320mm) | ○ | | |
| 0.044m ³ 280mm (350mm) | ○ | | |
| 0.055m ³ 350mm (420mm) | | ○ | |
| 0.055m ³ 300mm (370mm) | | | ○ |
| 0.09m ³ 430mm (500mm) | ● | ○ | |
| 0.11m ³ 530mm (600mm) | ○ | ● | |
| 0.11m ³ 430mm (500mm) | | | ○ |
| 0.13m ³ 630mm (700mm) | | ○ | |
| 0.14m ³ 535mm (600mm) | | | |
| 0.16m ³ 585mm (650mm) | | | ● |
| Track shoes | | | |
| 300mm rubber shoes | ● | ● | |
| 400mm rubber shoes | | | ● |
| 300mm steel shoes | ○ | ○ | |
| 400mm steel shoes | | | ○ |
| 300mm steel shoes with rubber pad | ○ | ○ | |
| 400mm steel shoes with rubber pad | | | ○ |
| 300mm road liner | ○ | ○ | |
| 400mm road liner | | | ○ |
| Blade | | | |
| Blade assembly | ● | ● | ● |
| Blade assembly with BOC | ○ | ○ | ○ |
| PAT blade (Coming soon) | ○ | ○ | ○ |
| Others | | | |
| Standard equipment | | Optional equipment | |
| <ul style="list-style-type: none"> • Additional counterweight • Air cleaner, single element • Automatic two-speed travel • Rear view mirrors, RH and LH • Seat belt, 78mm width • Steering pedals • Travel alarm • Two-post ROPS & Top guard canopy | | <ul style="list-style-type: none"> • Additional working light • Cigarette lighter (for cab) • Pattern change valve (ISO - Backhoe) • Radiator net • Rigid seat, reclining • ROPS & Top guard cab with heater, front window washer/wiper, cup holder and ashtray • Seat belt, 50mm width | |

OPERATING WEIGHT

PC30MR-2 3,180kg

PC35MR-2 3,740kg

PC50MR-2 5,040kg

KOMATSU®

PC30MR-2 PC35MR-2 PC50MR-2



GAULT

COMPACT HYDRAULIC EXCAVATOR

KOMATSU

Komatsu Utility Europe

Head Office
via Atheste 4
35042 Este (Padova) - Italy
Tel. +39 0429 616111
Fax +39 0429 601000
www.komatsueurope.com
utility@komatsu.it

CE



WALK-AROUND

OPERATING WEIGHT
 PC30MR-2 3,180kg
 PC35MR-2 3,740kg
 PC50MR-2 5,040kg



Photo may include optional equipment



Komatsu's highly productive, innovative technology, environmentally friendly machines built for the 21st century.

Tight tail swing

Operator can focus more on the work in front of them and worry less about rear swing impact in confined areas with only 3" protrusion over the trucks.

Two-post ROPS & Top guard canopy

- The two-post canopy meets the safety regulations, ROPS and Top guard.
- Operator can keep excellent visibility.
- Easy to get on and off.

Larger entrance and foot space

Operator can operate the machine comfortably with suspension & reclining seat.

Walk through type operator space

Operator can get on and off easily from both sides, thanks to larger foot space & two-post canopy.

Large operator's cab (optional equipment)

Large operator space same as PC228US-3.

Large capacity air conditioner (optional equipment)

Keep a comfortable operator environment throughout the year.

Wide working ranges

MR-2 series have wider working ranges with high stability.

Greater digging force

To exceptional productivity, combined with superior stability and well-received CLSS.

Superior lifting capacity

MR-2 series offers high lifting capacity and high stability in spite of tight tail machine design.

Automatic two-speed travel

In high speed travel, travel speed is automatically shifted from high speed to low speed according to the load of the travel.

Tilt-up operator compartment & Full opening engine hood and side hood

Operator's compartment floor tilts forward for easy access to hydraulic compartments. Full opening hoods are easy to access for daily inspection and faster service.

500 hour maintenance interval

Extended lubrication intervals of equipment bushings and swing circle and extended engine oil replacement intervals reduce maintenance costs and down time.

X-track frame

Soil does not accumulate on the track frame, due to the rounded design and wide opening.

PRODUCTIVITY FEATURES

Tight tail swing

Operator can focus more on the work in front of them and worry less about a rear swing impact, even in confined areas with only an 80mm projection over the tracks.



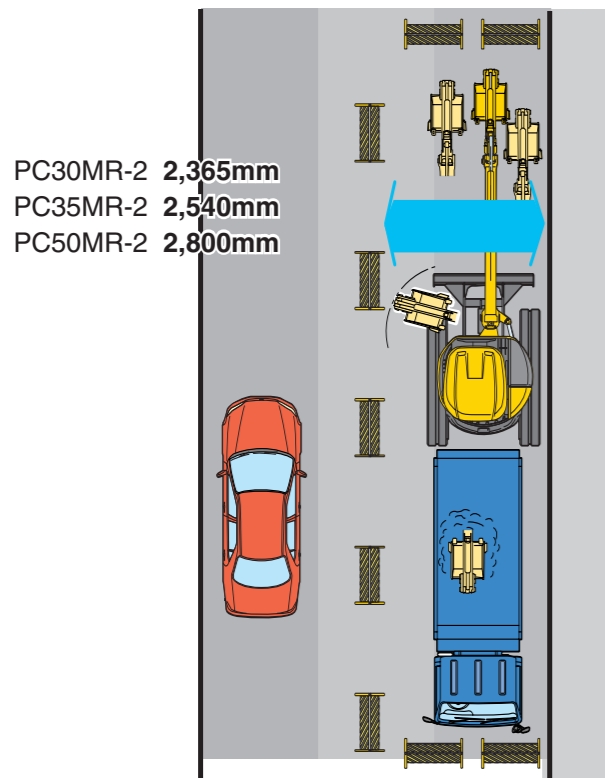
X-weight

The machine is transformed to zero tail swing by simply removing the X-weight.



Confined job site advantage

Operator can focus on digging and improve productivity, because they can worry less about obstacles to the rear of the machine, such as parked cars, walls and trees.



*: When boom swing

CLSS HydraMind hydraulic system

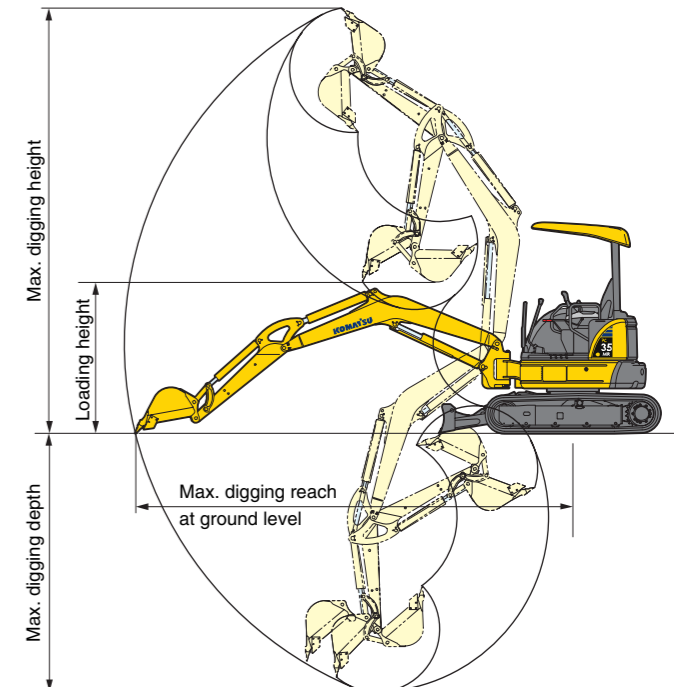
Even when two or more actuators are operated simultaneously, the pressure-compensated CLSS system ensures each actuator works according to its control input, regardless of the size of the load. This gives the operator precise control at all times.

Wide working ranges

Maximum digging height and loading height of the MR-2 series are significantly greater than that of the MR-1 series. Moreover, with the PC50MR-2, the maximum digging depth and maximum digging reach are greater than those of the MR-1. Wider working ranges enhance overall operating performance.

| | PC30MR-2 | PC35MR-2 |
|------------------------------------|----------|----------|
| Max. digging height | 4950mm | 5010mm |
| Max. digging depth | 2910mm | 3170mm |
| Max. digging reach at ground level | 5060mm | 5225mm |
| Loading height | 1730mm | 1805mm |

| | PC50MR-2 |
|------------------------------------|----------|
| Max. digging height | 5945mm |
| Max. digging depth | 3800mm |
| Max. digging reach at ground level | 6070mm |
| Loading height | 1930mm |



Greater digging force

Maximum bucket digging force of the MR-2 series is greater than that of the MR-1 series.

| | PC30MR-2 | PC35MR-2 |
|----------------------------|----------|----------|
| Max. crowd force: Arm | 1800 | 2100 |
| Max. digging force: Bucket | 3000 | 3050 |

| | PC50MR-2 |
|----------------------------|----------|
| Max. crowd force: Arm | 2440 |
| Max. digging force: Bucket | 3980 |

Large auxiliary flow

Auxiliary flow increased 40% therefore PC35MR-2 operates attachments more efficiently.

| | PC30MR-2 | PC35MR-2 |
|----------------|----------|----------|
| Auxiliary flow | 50 | 70 |

| | PC50MR-2 |
|----------------|----------|
| Auxiliary flow | 70 |

Large drawbar pull

| | PC30MR-2 | PC35MR-2 |
|-------------------|----------|----------|
| Max. drawbar pull | 3400 | 3600 |

| | PC50MR-2 |
|-------------------|----------|
| Max. drawbar pull | 4280 |

Automatic two-speed travel

Travel speed is automatically shifted from high to low speed according to the travel load. Combined with a large drawbar pull, the operator can efficiently fill trenches using the back fill blade.

High stability

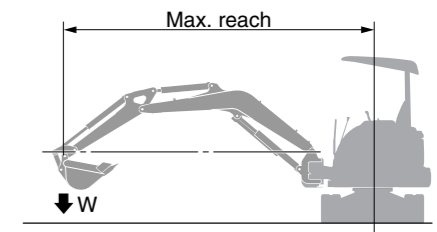
The MR-2 series offers exceptional lifting capacity and high stability in spite of being a tight tail machine.

Lifting capacity comparison

| | PC30MR-2 | PC35MR-2 |
|----------------------|----------|----------|
| 3m | 495 | 720 |
| Rating at max. reach | 300 | 400 |

| | PC50MR-2 |
|----------------------|----------|
| 3m | 1240 |
| Rating at max. reach | 520 |

The conditions of this comparison are a standard arm, sideways, blade on ground, and at a height of 0m (ground level).



OPERATOR ENVIRONMENT



Large entrance and foot space

The two-post canopy design allows the MR-2 to have larger entrance to get on and off easily. The wide walk through space also allows the operator to enter and exit by either side. By automating the travel speed, we are eliminated a foot pedal offering additional foot space.

Reclining & suspension seat

lessens operator fatigue.

Joystick controls

for continuous, comfortable operation.



Excellent visibility

Operator can maintain excellent visibility at all times with no forward obstructions and minimal rear obstructions.



Pattern change valve (optional equipment)

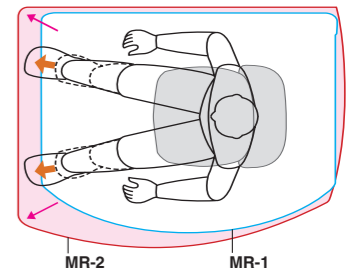
Whether you are comfortable with ISO or SAE control patterns, you can easily and consciously change from one to the other.



Photo may include optional equipment

Large operator's cab (optional equipment)

The cab offers large operator foot space equivalent to PC78US-6. The ergonomically designed feature helps reduce fatigue and increase focus on the job. The large rear glass provides the operator excellent rear visibility.



Upper-rail type sliding door

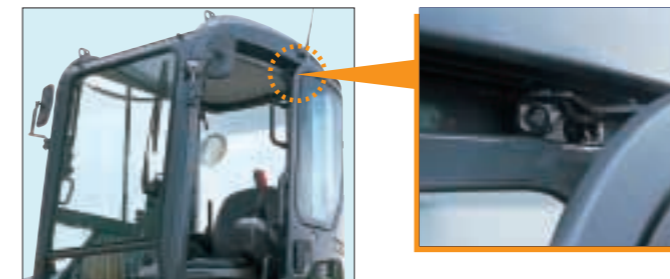


Photo may include optional equipment

Large rear glass



Large-capacity air conditioner (optional equipment)

Provides comfortable operator space throughout the year

EASY MAINTENANCE

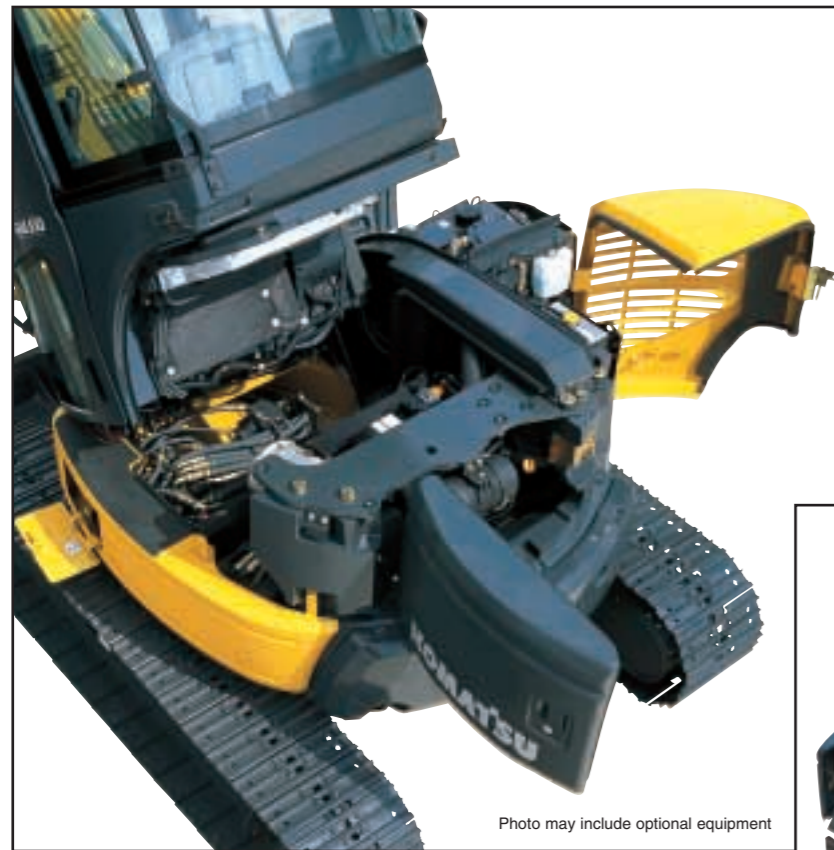


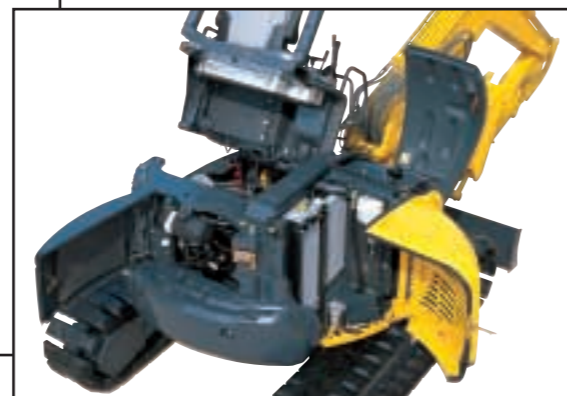
Photo may include optional equipment

Tilt-up operator compartment

Operator's compartment floor tilts forward for easy access to hydraulic compartments. This function is not required for daily inspection, however, it is possible to perform servicing quickly in an emergency.

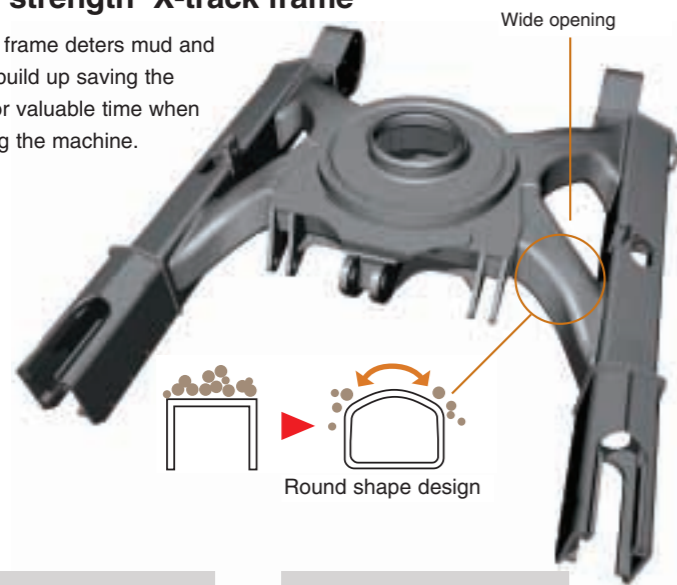
Full opening engine hood and side hood

allows to access for daily inspection



High strength X-track frame

X-track frame deters mud and debris build up saving the operator valuable time when cleaning the machine.



500 hour maintenance interval

Extended lubrication intervals of equipment bushing and swing circle, and extended engine oil replacement interval reduce maintenance costs.

Comparison of periodic service intervals hours

| | MR-2 SERIES |
|--|-------------|
| Lubricating to swing circle | 500 |
| Lubricating to bushing of work equipment | 500 |
| Replacement of engine oil | 500 |

Larger diameter swing pin

It has high durability and maintains suitable clearances between pin and bushing after long-term operation.

Built-in hydraulic hoses



Face seal

O-ring face seals having high sealing performance are used for hydraulic piping joints.



DT connector

Water-resistant DT connectors seal tight and have higher reliability.

SAFETY FEATURES

Two-post ROPS & Top guard canopy

ROPS [Roll-Over Protective Structures]

This canopy meets the requirements of ROPS, with the advantage of a two-post design.



ROPS & Top guard cab



Neutral engine start system

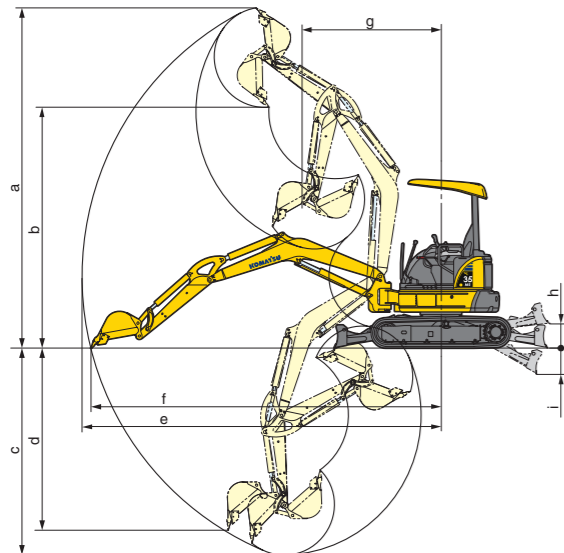
eliminates accidents due to sudden motion or boom movement at start up.



SPECIFICATIONS

| | | PC30MR-2 | PC35MR-2 | PC50MR-2 | |
|--------------------|---|--------------------|----------------------------------|----------------------------------|----------------------------------|
| Performance | Operating weight | kg | 3180 ROPS Canopy, Rubber shoe | 3740 ROPS Canopy, Rubber shoe | 5040 ROPS Canopy, Rubber shoe |
| | Flywheel horse power | kW/rpm HP/rpm | 20.6/2500 27.6/2500 | 21.7/2400 29.1/2400 | 29.4/2350 39.4/2350 |
| | Bucket capacity (SAE heaped) (CECE heaped) | m ³ | 0.09 0.08 | 0.11 0.10 | 0.16 0.14 |
| | Bucket width (incl. side cutters) | mm | 430 500 | 530 600 | 585 650 |
| Performance | Travel speed Hi | km/h | 4.6 | 4.6 | 4.6 |
| | Travel speed Lo | km/h | 2.6 | 2.8 | 2.8 |
| | Swing speed | rpm | 9.3 | 9 | 9 |
| | Ground pressure | kg/cm ² | 0.30 | 0.35 | 0.29 |
| | Max. traction force | kg | 3400 | 3600 | 4280 |
| | Gradeability | deg. | 30 | 30 | 30 |
| | Bucket digging force(ISO) | kg | 3000 | 3050 | 3980 |
| Engine | Arm crowd force(ISO) | kg | 1800 | 2100 | 2440 |
| | Model | — | Komatsu 3D84E-5 | Komatsu 3D88E-5 | Komatsu 4D88E-5 |
| | Type | — | Direct injection | Direct injection | Direct injection |
| Electric system | Piston displacement | ltr. | 1.496 | 1.642 | 2.189 |
| | Operation voltage | V | 12 | 12 | 12 |
| Blade | Battery | Ah | 68 | 68 | 72 |
| | Alternator | A | 40 | 40 | 40 |
| | Starter | kW | 2 | 2 | 2.3 |
| Drive system | Width × height | mm | 1550 × 355 | 1740 × 355 | 1960 × 355 |
| | Drive method | — | Hydrostatic | Hydrostatic | Hydrostatic |
| | Type of travel brake | — | Hydraulic lock type | Hydraulic lock type | Hydraulic lock type |
| Undercarriage | Type of travel shoe | — | Rubber | Rubber | Rubber |
| | Adjustment of the track tension | — | Grease | Grease | Grease |
| | Number of shoes (for each side) | — | 43 | 43 | 38 |
| | Number of carrier rollers (for each side) | — | 1 | 1 | 1 |
| Hydraulic system | Number of track rollers (for each side) | — | 4 | 4 | 4 |
| | Type of hydraulic pump | — | Variable capacity × 1 gear × 1 | Variable capacity × 2 gear × 1 | Variable capacity × 2 gear × 1 |
| | Max. oil flow | ltr/min | 72.7 × 1 + 20.6 | 36.1 × 2 + 19.8 | 51 × 2 + 32 |
| | Hydraulic motor (travel) | — | Variable capacity × 2 | Variable capacity × 2 | Variable capacity × 2 |
| | (swing) | — | fixed capacity × 1 | fixed capacity × 1 | fixed capacity × 1 |
| Refilling capacity | Max. pressure setting | kg/cm ² | 265 | 265 | 270 |
| | Auxiliary hydraulic flow | ltr/min | 50 | 70 | 70 |
| | Fuel tank | ltr. | 44 | 44 | 65 |
| | Hydraulic tank | ltr. | 20 | 20 | 20 |
| Coolant | Engine | ltr. | 7.2 | 7.2 | 7.4 |
| | Coolant | ltr. | 3.3 | 3.3 | 7.3 |

WORKING RANGE



| | PC30MR-2 | PC35MR-2 | PC50MR-2 | |
|---------------------------------------|----------|----------|----------|------|
| STD ARM WORKING RANGE | | | | |
| a Max. digging height | mm | 4950 | 5010 | 5945 |
| b Max. dumping height | mm | 3450 | 3530 | 4230 |
| c Max. digging depth | mm | 2910 | 3170 | 3800 |
| d Max. vertical digging depth | mm | 2650 | 2720 | 3020 |
| e Max. digging reach | mm | 5150 | 5360 | 6220 |
| f Max. digging reach at ground level | mm | 5060 | 5225 | 6070 |
| g Min. swing radius (When boom swing) | mm | 2010 | 2080 | 2270 |
| h Max. blade lift | mm | 360 | 360 | 430 |
| i Max. blade depth | mm | 310 | 390 | 330 |
| LONG ARM WORKING RANGE | | | | |
| a Max. digging height | mm | 5180 | 5330 | 6215 |
| b Max. dumping height | mm | 3690 | 3835 | 4495 |
| c Max. digging depth | mm | 3280 | 3510 | 4160 |
| d Max. vertical digging depth | mm | 2900 | 3030 | 3380 |
| e Max. digging reach | mm | 5490 | 5745 | 6570 |
| f Max. digging reach at ground level | mm | 5365 | 5620 | 6430 |
| g Min. swing radius (When boom swing) | mm | 2140 | 2170 | 2380 |
| h Max. blade lift | mm | 360 | 360 | 430 |
| i Max. blade depth | mm | 310 | 390 | 330 |

LIFTING CAPACITY

PC30MR-2 Blade on ground with additional counterweight (X-weight)

| Arm length | | 2m | | 3m | | 4m | | Maximum | |
|------------|-----|-------|------|-------|------|-------|------|---------|------|
| | | Front | Side | Front | Side | Front | Side | Front | Side |
| 1260mm | 3m | | | *785 | 570 | *825 | 345 | *800 | 380 |
| | 2m | | | *1005 | 550 | *825 | 345 | *805 | 305 |
| | 1m | | | *1325 | 515 | *1000 | 390 | *825 | 285 |
| | 0m | *2680 | 830 | *1445 | 495 | *940 | 325 | *855 | 300 |
| | -1m | *2155 | 925 | *1270 | 500 | | | *870 | 370 |
| 1660mm | 0m | *2825 | 895 | *1415 | 490 | *930 | 320 | *760 | 260 |

*Load is limited by hydraulic capacity rather than tipping. Rated loads do not exceed 87% of hydraulic capacity or 75% of tipping load.

PC35MR-2 Blade on ground with additional counterweight (X-weight)

| Arm length | | 2m | | 3m | | 4m | | Maximum | |
|------------|-----|-------|------|-------|------|-------|------|---------|------|
| | | Front | Side | Front | Side | Front | Side | Front | Side |
| 1350mm | 3m | | | *770 | *770 | *750 | 505 | *750 | 485 |
| | 2m | | | *1045 | 790 | *815 | 500 | *765 | 410 |
| | 1m | | | *1380 | 745 | *925 | 485 | *780 | 385 |
| | 0m | *2635 | 1350 | *1495 | 720 | *950 | 460 | *810 | 400 |
| | -1m | *2230 | 1370 | *1345 | 725 | *835 | 475 | *835 | 475 |
| 1750mm | 0m | *2915 | 1330 | *1395 | 665 | *940 | 455 | *705 | 335 |

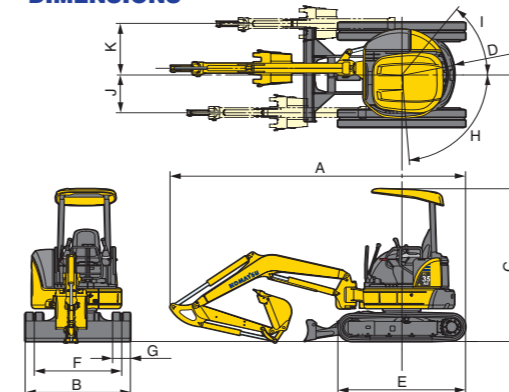
*Load is limited by hydraulic capacity rather than tipping. Rated loads do not exceed 87% of hydraulic capacity or 75% of tipping load.

PC50MR-2 Blade on ground with additional counterweight (X-weight)

| Arm length | | 2m | | 3m | | 4m | | Maximum | |
|------------|-----|-------|-------|-------|-------|-------|------|---------|------|
| | | Front | Side | Front | Side | Front | Side | Front | Side |
| 1640mm | 3m | | | | | *805 | *805 | *835 | 590 |
| | 2m | | | *1330 | *1330 | *1025 | 880 | *880 | 525 |
| | 1m | | | *1995 | 1295 | *1295 | 840 | *935 | 505 |
| | 0m | *1590 | *1590 | *2325 | 1240 | *1480 | 810 | *1005 | 520 |
| | -1m | *2755 | 2410 | *2305 | 1230 | *1505 | 800 | *1090 | 590 |
| 2000mm | 0m | *1525 | *1525 | *2205 | 1220 | *1395 | 790 | *890 | 450 |

*Load is limited by hydraulic capacity rather than tipping. Rated loads do not exceed 87% of hydraulic capacity or 75% of tipping load.

DIMENSIONS



| | PC30MR-2 | PC35MR-2 | PC50MR-2 | |
|----------------------|----------|-----------|-----------|-----------|
| A Overall length | mm | 4630 | 4850 | 5550 |
| B Overall width | mm | 1550 | 1740 | 1960 |
| C Overall height | mm | 2530 | 2530 | 2625 |
| D Tail swing radius | mm | 855 | 950 | 1060 |
| E Crawler length | mm | 2105 | 2105 | 2520 |
| F Track gauge | mm | 1250 | 1440 | 1560 |
| G Track shoe width | mm | 300 | 300 | 400 |
| H/I Boom swing angle | deg. | LH85/RH50 | LH85/RH50 | LH85/RH50 |
| J Bucket offset LH | mm | 585 | 585 | 630 |
| K Bucket offset RH | mm | 845 | 845 | 880 |